



OTTO

ALLTECH FEI WORLD EQUESTRIAN GAMES 2010, LEXINGTON KY +++ ROLEX FEI WORLD CUP FINALS 2011, LEIPZIG +++ KENTUCKY HORSE PARK, LEXINGTON KY +++ GREAT SOUTHWEST EQUESTRIAN CENTER, KATY TX +++ RAMZY AL DUHAMI +++ REITSPORTVEREIN STOCKFELDERHOF E.V., ORSINGEN-NENZINGEN +++ ARTISAN FARMS, WELLINGTON FL +++ PALM BEACH EQUINE CLINIC, WELLINGTON FL +++ REIT- UND FAHRVEREIN PFERDEFREUNDE, WENDELSTEIN +++ LUCKY FARMS, CARMEL IN +++ NEWSTEAD FARM, WELLINGTON FL +++ SQUARE LAKE FARM, STILLWATER MN +++ MONTY ROBERTS, FLAG IS UP FARMS, SOLVANG CA +++ OTTOSPORT +++ REIT- UND FAHRVEREIN BAD SOODEN-ALLENDORF +++ PAMELA JONES, KAILUA HI +++ REITHOF DÜWIGER, HOISDORF +++ FERREIRA DA ROCHA, SÃO PAULO +++ REITARENA STUBAI, FULPMES +++ BILLY TWOMEY +++ RACE TRACK PALM SPORTS RE

BILLY TWOMEY +++ RACE TRACK PALM SPORTS RESORT AL-AIN, ABU DHABI +++ OFFICERS SHOOTING CLUB, ABU DHABI +++ REITERHOF GUT STOCKUM GMBH, BISSENDORF+++ ZABEL EL STABLES, DUBAI +++ REITSTALL ST. LEOPOLD, KLOSTER NEUBURG +++ OTTOSPORT +++ AL SHAQAB STUD, DOHA +++ DOHA RACING & EQUESTRIAN CLUB, DOHA +++ RACE TRACK NIIGATA +++ HANWHA STABLES, SEOUL +++ NATIONAL CHAMPIONSHIPS DRESSAGE, HUNGARY +++ OTTOSPORT +++ FEI WORLD EQUESTRIAN GAMES 2006, AACHEN +++ REITVEREIN ST. GEORG EUSKIRCHEN E. V. +++ FEI WORLD EQUESTRIAN GAMES 1998, ROME +++ ASIAN GAMES 2006, DOHA +++ ROLEX FEI WORLD CUP™ FINAL 2006, KUALA LUMPUR +++ REPUBLIC CENTER OF OLYMPIC PREPARATION OF EQUESTRIAN SPORT AND HORSE BREEDING, RATOMKA +++ ROLEX FEI WORLD CUP™ LEIPZIG +++ ROLEX FEI WORLD CUP™



OTTO FAMILY-OWNED ENTERPRISE

ABOUT US

ALLOW US TO INTRODUCE OURSELVES...

OTTO Sport- und Reitplatz GmbH is one of the leading providers of high-quality solutions for planning and installing riding arenas.

The history of Otto Sport- und Reitplatz GmbH has its origins in the early 1960s when company founder Werner Otto started being engaged in the construction of sports arenas.

During the late 1980s he began to specialize in riding arenas. From that time on, his passion for horses, his constant striving for improvement and continuous research has led to several patents in the equestrian field. Today, the many years of experience and technical expertise can be seen at more than 5 000 arenas around the world.

As experts in riding arenas of various designs and for every type of discipline and working hand in hand with our clients, we develop customized solutions which, at the same time, provide ultimate comfort and safety for horse and rider. Personal consultation and support are self-evident for us.

Our desire to live up to our clients' wishes motivates us to strive for excellence each and every day.



Werner Otto
Manager



Wolfgang Otto
Manager

GLOBAL PLAYERS IN RIDING ARENAS FOR 25 YEARS

FAMILY BUSINESS RUN BY PASSIONATE RIDERS
AND HORSE ENTHUSIASTS

QUALITY: MADE IN GERMANY

ACTIVE! FOR ENVIRONMENT AND NATURE

FROM BAVARIA ALL AROUND THE WORLD

CARING AND SOCIALLY COMMITTED





CONTENT

OTTO PERFORATED MAT	10 - 13	OTTO DESERT MAT	34 - 35
OTTO ARENA FOOTING LAYERS	14 - 15	OTTO PADDOCK SURFACE	38 - 39
RIDING ARENA	20 - 21	OTTO STABLE MAT	42 - 43
SUBTERRANEAN IRRIGATION SYSTEM	22 - 23	OTTO RUBBER BRICKS	44 - 45
OTTO COMPETITION SURFACE	26 - 27	OTTO ARENA LEVELLERS	46 - 47
OTTO INDOOR ARENA	30 - 31	OTTO RACE TRACKS	48 - 49



Janne Friederike Meyer mit Cellagon Lambrusco, Weltreiterspiele Kentucky Horse Park 2010

OTTO PERFORATED MAT FOR EQUESTRIAN ARENAS & PADDOCKS

COPIED MANY TIMES – BUT NEVER MATCHED: THE ORIGINAL OTTO PERFORATED MAT IS A BASE ANCHORAGE FOR EQUESTRIAN ARENAS AND PADDOCKS THAT IS SPECIALLY DESIGNED FOR EQUESTRIAN SPORTS AND IS SET UNDERNEATH THE FOOTING. IT GUARANTEES A PROPER AND DURABLE SEPARATION OF SUBSTRUCTURE AND FOOTING, MAXIMUM DRAINAGE, WATER SAVING, CONCUSSION MITIGATION AND STABILITY.

1. SEPARATION OF SUBSTRUCTURE AND FOOTING

- a) The mat eliminates all upward shifting of substructure (rocks) into the footing.
- b) Concave shaped “Lock-out-rings” prevent all lateral shifting of the mat. Sand cannot get under the mats, drainage and sub-base can not get destroyed – no more wave forming of your arena.

2. DRAINAGE Surplus water drains off quickly through drainage holes. Even after persistent rain activity the arena can be used immediately.

3. WATER RESERVOIRS Up to four liters of water per square meter are conserved in the water reservoir, which permanently saves watering costs.

4. ELASTICITY According to scientific tests, the Perforated Mat absorbs up to 40% of the force caused by the striking hoof, which protects the horses’ musculoskeletal system.

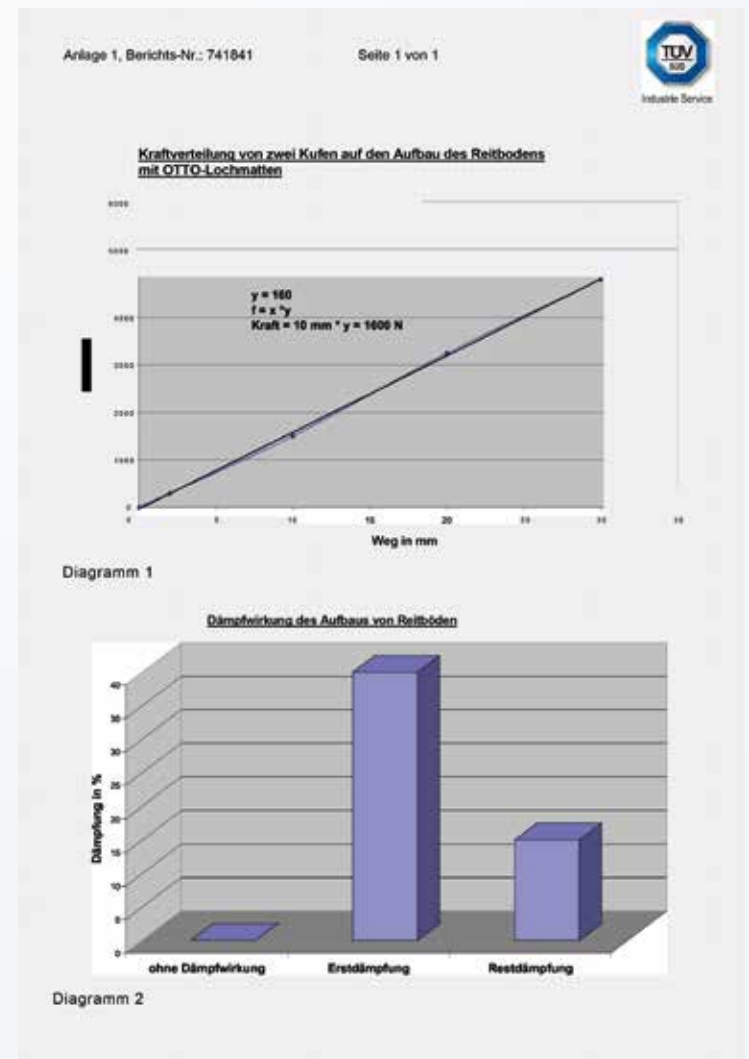
5. SKID RESISTANCE A specially designed system of traction-knobs of different lengths on the upper side of the OTTO Perforated Mat guarantees a secure surface and base and high stability – a priceless advantage during sharp bends and turns.





Matthias Rath, Pfingstturnier Wiesbaden

PERFORATED MAT FOR RIDING ARENA & Paddock



PRODUCT INFORMATION

Measures	approx. 117 x 85 x 5 cm
Covered Area	approx. 1sqm
Weight	approx. 20kg
Material	Resilient Synthetics
Guarantee	20 years on functionality

Our contribution to environmental protection

OTTO Perforated Mats are manufactured using recycled synthetics. This is our active contribution to environmental protection and a sustainable development. Subjecting the mats to inspections by TÜV (German Association for Technical Inspection) for compliance with legal requirements concerning soil and groundwater protection on a regular basis are a permanent feature of quality assurance for us. This is why we can say with a clear conscience that the OTTO Perforated Mat fulfills all requirements of the Federal Soil Protection and Contaminated Sites Ordinance of Germany as well as those specified in the fact sheet of the Regional Waste Institute (LAGA).

OTTO ARENA FOOTING LAYERS

OTTO FOOTINGS PROVIDE CUSTOMIZED SOLUTIONS FOR EVERY EQUESTRIAN DISCIPLINE. INDIVIDUALLY ADAPTED TO YOUR DEMANDS AND THE NEEDS OF THE RESPECTIVE DISCIPLINE, WE WILL FIND THE RIGHT FOOTING MIXTURE FOR ANY ARENA OR PADDOCK. ADDITIONALLY, WE OFFER VARIOUS TYPES OF FOOTING WITH AND WITHOUT ADDITIVES.



NOT ALL SAND IS CREATED EQUAL! As a company with references all over the world we prefer working with top-of-the-line sand that deserves to be designated as „sand for equestrian sports“. For our special footing mixtures we only use types of sands that have been tested in our company-owned laboratory and meet the highest quality standards for use as “equestrian sports sand”.

OTTO-ARENATEX („KENTUCKY BLEND“)

This modern footing type will put your riding arena in the limelight! OTTO-ArenaTex contains geotextiles and synthetic fibres as amendments in order to ensure the appropriate surface consistency. Moreover, the geotextiles help maintaining correct moisture levels of the footing - they save up to 10 litres of water per square metre. One of the major advantages of OTTO-ArenaTex is its great durability.



OTTO-ARENASPAN

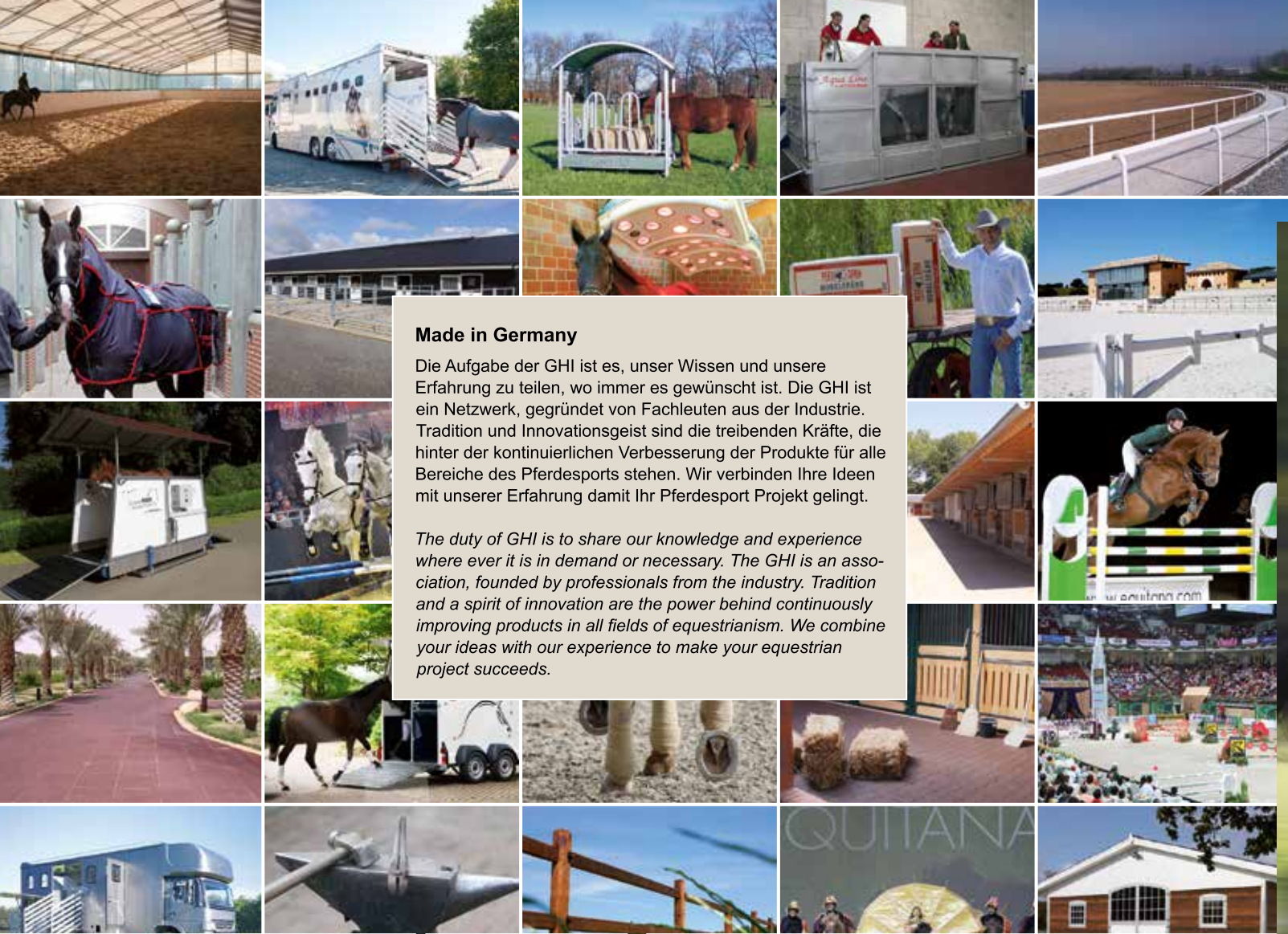
The classic footing :
The sand is mixed with wooden chips to guarantee the correct surface consistency.



OTTO-ARENAPAD

A mixture that is specially matched to the specific demands of paddocks: OTTO-ArenaPad enhances drainage features of paddocks, particularly in combination with the OTTO Perforated Mat. Therefore, surplus water always drains off quickly and horses will feel comfortable all around.





Made in Germany

Die Aufgabe der GHI ist es, unser Wissen und unsere Erfahrung zu teilen, wo immer es gewünscht ist. Die GHI ist ein Netzwerk, gegründet von Fachleuten aus der Industrie. Tradition und Innovationsgeist sind die treibenden Kräfte, die hinter der kontinuierlichen Verbesserung der Produkte für alle Bereiche des Pferdesports stehen. Wir verbinden Ihre Ideen mit unserer Erfahrung damit Ihr Pferdesport Projekt gelingt.

The duty of GHI is to share our knowledge and experience where ever it is in demand or necessary. The GHI is an association, founded by professionals from the industry. Tradition and a spirit of innovation are the power behind continuously improving products in all fields of equestrianism. We combine your ideas with our experience to make your equestrian project succeeds.



Unser komplettes Sortiment und einen Händler in Ihrer Nähe finden Sie unter:
For our complete product range and to find a retailer in your vicinity, please see:
www.waldhausen.com



KLAUS BALKENHOL

„It is important that the soil is neither too hard nor too smooth. For horses, the soil has to be a little skidding, so it shouldn't be too blunt. Additionally, the soil has to be water-permeable and ought to have a good degree of moisture. It should neither be muddy nor too dry. Mats fulfilling these requirements we received from Otto Sport, a well-known producer of equestrian surfaces with presence around the globe (e.g. for the World Equestrian Games of Rome 1998). We applied to Otto Sport, and it was a good decision to construct our equestrian surface in that way. We also use OTTO mats in our indoor arena as we need a soil which is level but not slippery. The knobs on the mats provide a good consistency so horses will find a strong foothold.”

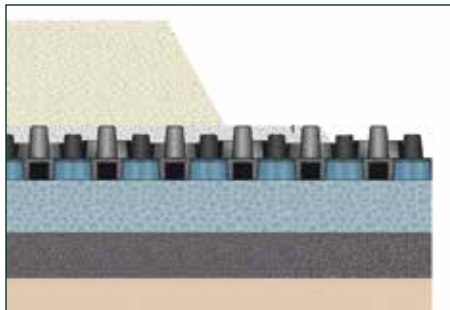


RIDING ARENA CONSTRUCTION

OUR EXPERTISE – YOUR BENEFIT

We construct our arenas according to the three-layers-model (sub-base layer – upper base – footing). First, topsoil should be removed and subsoil be compacted to get a even and stable surface. For the construction of outdoor arenas, a light slope of about 1.5% is necessary. For indoor arenas a slope is not necessary.

1. THE STRUCTURE – SCHEME OF THE ARENA



FOOTING	A specially mixed footing that meets the requirements of the desired equestrian discipline is installed with laser-controlled machines.
SEPARATION LAYER	OTTO Perforated Mats are set on a washed stone layer with a gap of approx. 3 cm and lightly rolled and filled with filter material.
SUB-BASE LAYER	Water-permeable layer – ideally local aggregates/stones which are installed with laser-controlled machines.

The above-mentioned three layer scheme is a standardized and simplified system. However, riding arena construction highly depends on the local conditions and the individual requests of the customers.

So please take advantage of the chance to get free advice from our experts – we are happy to assist you in all questions regarding the construction of your arena!

2. REALIZATION

When it comes to realization, we can offer you several possibilities at different price points:

COMPLETE CONSTRUCTION READY TO USE 🐾🐾🐾

Our experts will personally take care of the entire realization from start to finish and finally present you with your completed arena.

SUPERVISOR 🐾🐾

You either have a local construction company do the work or you bring your own labor, which takes over a part of the work. One of our riding arena experts supervises the correct realization and provides assistance when it comes to specialist questions.

DO-IT-YOURSELF 🐾

You have a local construction company do the work using the necessary machinery and assist them in it. You will receive an installation manual showing you every single stage of the work.

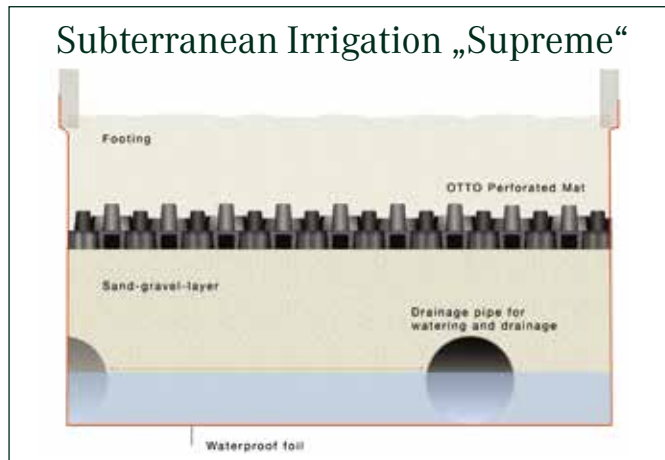
Make use of our “OTTO Modular Construction System”

Of course, you can obtain all materials and services that are necessary for constructing your arena from us. According to your wishes, we will supply you with either individual components or the full solution.



SUBTERRANEAN IRRIGATION WATERING “FROM BELOW”

SUBTERRANEAN-IRRIGATION-SYSTEMS SERVE TO PROVIDE CONTINUOUS AND CONSISTENT FOOTING.



With our Subterranean-Irrigation-System, watering is done “from below”:
 By means of sensors, the water level is measured constantly and regulated accordingly through a piping system in order for the footing to remain steadily moist. Watering the arena manually, which can often be troublesome, is no longer necessary. Our Subterranean-Irrigation-System is available in two versions: “CLASSIC” (without OTTO Perforated Mats) and “SUPREME” (with OTTO Perforated Mats).

Essentially, both versions are equal in functionality. A decisive difference, however, is that using the “SUPREME” version of the system, OTTO Perforated Mat provides lasting elasticity and, as a result, considerably higher comfort for the horses’ musculoskeletal system compared to the “CLASSIC” version.





LARS NIEBERG

„I HAVE BEEN RIDING AND TRAINING ON OTTO MATS SINCE 1996 WHEN I TOOK CHARGE OF THE WÄLDERSHAUSEN STUD. I AM CONVINCED OF THE OPTIMAL DRAINAGE FEATURES AND THE CONCUSSION ABSORPTION. HOOVES AND JOINTS OF MY HORSES ARE EVIDENTLY LESS CLAIMED. AT INTERNATIONAL EQUESTRIAN EVENTS I ALWAYS HAD GOOD EXPERIENCES ON OTTO SPORT SURFACES WHICH RECEIVE RAVE REVIEWS BY THE COMPETITORS REGULARLY.”



OTTO TOURNAMENT MAT IN TOP SHAPE FOR SEASONAL OR TEMPORARY EVENTS

Our service for tournament organizers and temporary equestrian events: especially in fair halls, concrete floors definitely provide insufficient skid resistance. OTTO Tournament Mats provide the solution. In addition, it creates the needed elasticity underneath the footing and protects the horses' musculoskeletal system. A further benefit: The mats can be installed and removed quickly and make maintenance easier.



As official supplier of many FEI World Cups, World Equestrian Games, European Championships and other equestrian sport events, we have wide experience in the field of temporary riding surfaces.

**We would be pleased to help you in your event.
Feel free to ask our experts.**

OTTO TOURNAMENT MAT



PRODUCT INFORMATION	
measures	approx. 117 x 84 x 4 cm
covered area	approx. 1sqm
weight	approx. 17 kg
material	elastic synthetics
guarantee	20 years on functionality

The little sister of OTTO Perforated Mat:
Our OTTO Tournament Mat will provide high quality conditions for your riding arena during short or seasonal tournaments in sports venues or fair halls. It can be installed and removed quickly and simplifies maintenance during the tournament without compromising skid resistance and elasticity.

Please note:
OTTO Tournament Mats are produced in limited quantity. Please contact us to check availability!



Willkommen im TRUCK CENTER!



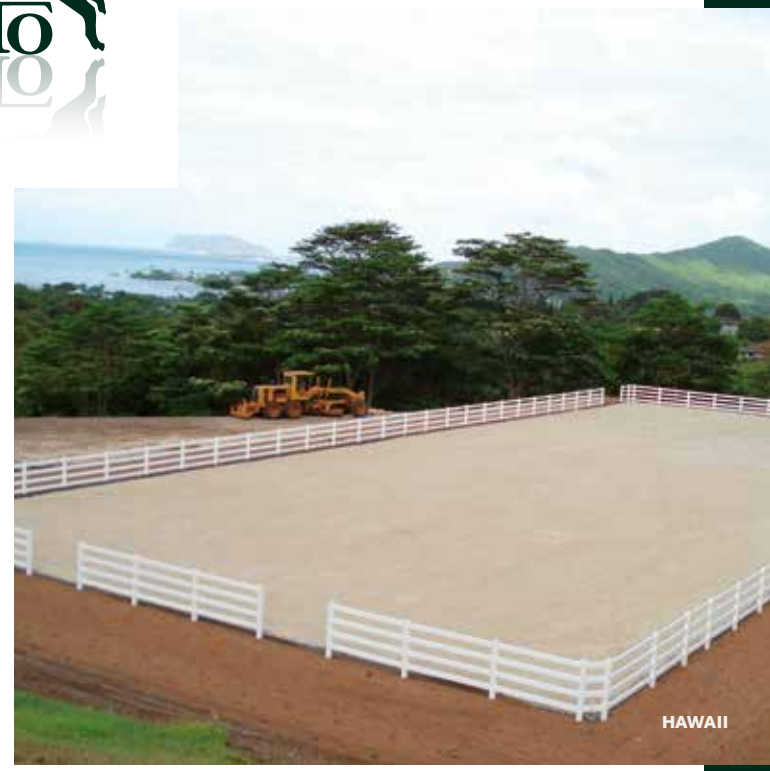
ITALY



USA



PORTUGAL



HAWAII

Entdecken Sie in Lastrup die gesamte Produktpalette von Neu- und Gebrauchtfahrzeugen, zahlreichen Musterwohnungen und einer großen Auswahl individueller Ausstattungsmöglichkeiten. – Rufen Sie einfach an: 04472 895-960.



OTTO MATS IN YOUR INDOOR ARENA

NO SPECIAL SUBSOIL NECESSARY

LESS FOOTING MATERIAL NEEDED

LESS WATER CONSUMPTION

CONCUSSION MITIGATION

SLIP RESISTANCE





LUKAS KLOUDA

„AFTER LONG-TERM EXPERIENCE WITH OTTO SPORT SURFACES AS AN ACTIVE COMPETITOR AT SEVERAL PREMIER EVENTS LIKE THE WORLD EQUESTRIAN GAMES OF AACHEN 2006, KENTUCKY 2010, THE WORLD CUP FINALS LEIPZIG 2011 OR EVEN AS THE ORGANIZER OF THE WORLD VAULTING CHAMPIONSHIPS BRNO 2008, I MUST SAY THAT I COULDN'T RECOMMEND ANY OTHER SURFACE THAN THIS. IT PROVIDES SOLID CONDITIONS FOR EVERY COMPETITOR, PERFECT ELASTICITY FOR HORSES OR EVEN FOR GYMNASTS WHEN THEY ARE LANDING ON IT. TOGETHER WITH EXPERIENCE, LONG WARRANTY AND LAST BUT NOT LEAST TÜV APPROVAL, THESE ARE ALL ARGUMENTS FOR ME TO DECIDE AGAIN FOR OTTO SPORT QUALITY NEXT TIME.“

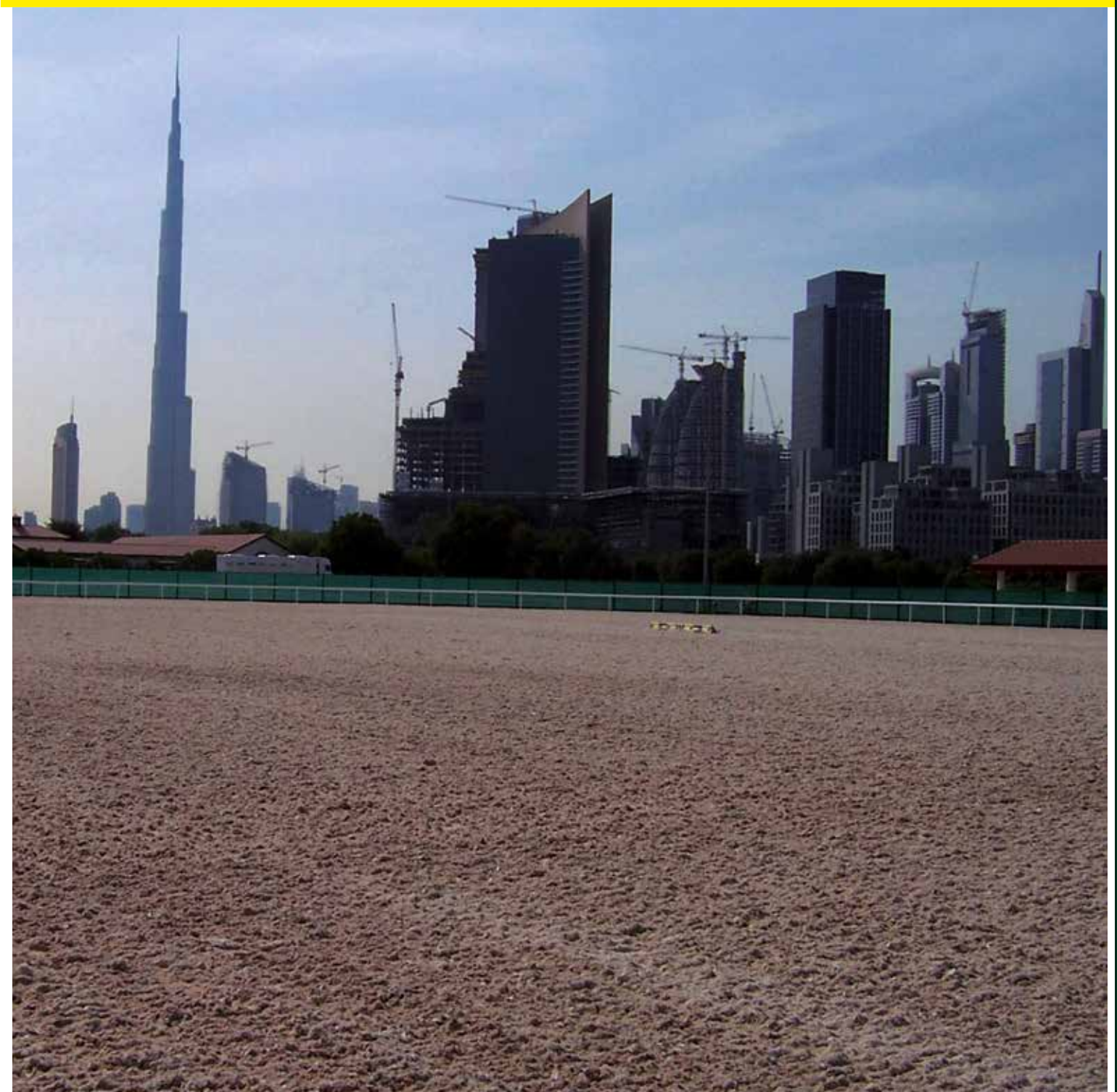
OTTO DESERT MAT FOR HOT REGIONS

The OTTO Closed Mat is specially designed for equestrian arenas in hot climate zones and extremely dry regions with very low precipitation probability, as for instance characteristic for the Arabian Pensinsula. This model offers the same quality features as the Perforated Mat: elasticity, concussion mitigation. It does, however, not need drainage holes.

In this way, the capacity of the water retention system is doubled to eight liters of water per square meter.



PRODUCT INFORMATION	
measure	approx. 117 x 85 x 5 cm
covered area	approx. 1 sqm
weight	approx. 22 kg
material	resilient synthetics
guarantee	20 years on functionality





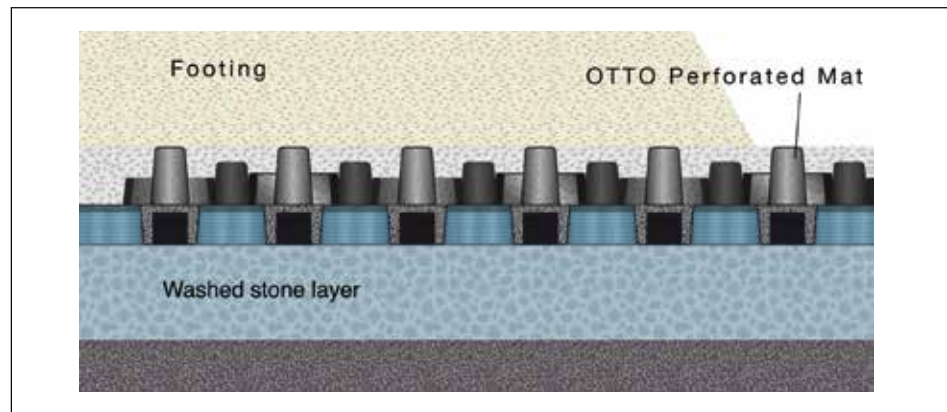
OTTO PADDOCK SURFACE

Take advantage of our “OTTO Modular Construction System”

Again, we offer you the “OTTO Modular Construction System”. Essentially, you can obtain all the needed materials from us. If requested, we can, however, also supply you with individual components which you can install yourself according to our instruction and by this save ready cash. Of course a professional installation manual comes with all our deliveries.

If you have any further questions, do not hesitate to contact us.

Paddock Construction Scheme



Just like regular arenas, paddocks are installed using the three-layer-system (sub-base layer – separation layer – footing). In this case as well, we recommend removing topsoil, and compacting subsoil and creating a light slope of 1.5%.

Installation is done analogously to riding arenas. Sand blend without footing amendments (e. g. OTTO Arena Pad) or local sand as footing layer is sufficient. We would be pleased to help you!



„WE ARE KEEN ON THE OTTO STABLE MATS THAT ARE SET IN OUR BARN. THE SPECIAL THING ABOUT THE OTTO PERFORATED MATS INSTALLED IN OUR PADDOCKS AND ARENAS IS THEIR ABILITY TO ENHANCE HORSES’ BLOOD CIRCULATION. A LOT OF RISKS CAN BE MINIMIZED OR EVEN COMPLETELY AVOIDED BY USING THE PERFORATED MATS. WE HAVE HAD VERY POSITIVE EXPERIENCE CONCERNING THE BLOOD CIRCULATION OF THE EXTREMITIES AND THE HOOF STRUCTURE.”

Dr. Med. Vet. Andrea Papst



MONTY ROBERTS

„I HAVE HAD SIGNIFICANT EXPERIENCE WITH OTTO SPORT AT GESTÜT FÄHRHOF FOR SEVERAL YEARS. MY OBSERVATIONS WOULD INDICATE THAT THIS WAS A VERY WISE DECISION. THE LONG TIME THAT I HAVE EXPERIENCED WITH OTTO SPORT HAS SHOWN ME MANY ADVANTAGES. THE SURFACE OF THE OTTO SPORT ROUND PEN STAYS MUCH MORE LEVEL THAN THE ONES HERE ON MY CALIFORNIA PROPERTY. IN ADDITION, I HAVE HAD THE SAME SOIL IN THE GERMAN ROUND PEN FOR SEVEN YEARS WHILE I HAVE CHANGED THE SOIL TWICE A YEAR IN CALIFORNIA. THE MOISTURE STAYS MORE EVENLY DISTRIBUTED WHICH SEEMS TO ME TO BE SAFER FOR THE HORSES. I KNOW THAT OTTO SPORT IS VERY EFFECTIVE, BOTH FROM THE STANDPOINT OF ITS ARCHITECTURAL VALUE AS WELL AS ITS QUALITIES REGARDING THE SAFETY AND WELL BEING OF THE HORSES.”



OTTO STABLE MATS FOR COMFORTABLE WARMTH IN STABLES

THE TRIED AND TESTED OTTO STABLE MATS CREATE A WARM AND COMFORTABLE ENVIRONMENT IN THE STABLES, PROVIDING MAXIMUM COMFORT FOR YOUR HORSES.

Special chambers on the bottom side of the mat create a warming air cushion. One major advantage is that fewer shavings are required, only what is necessary to soak up urine.

Further benefits:

The air circulates and no condensation water is created underneath the mat. The amount of waste produced is far lower – mucking out and maintaining stables is done without any great effort.

Installing the OTTO Stable Surface is really easy:

The mats interlock with one another and can be set on any solid and level ground. If required, they may be cut to the desired size with a saw.

PRODUCT INFORMATION

measure	approx. 115 x 75 x 4 cm
covered area	approx. 0,86sqm
weight	approx. 28 kg
material	resilient synthetics



RUBBER BRICKS SAFETY IN WASHING AREAS AND HORSE WALKERS

RUBBER BRICKS ARE THE IDEAL FLOORING FOR PATHWAYS; WASH AND GROOMING AREAS AND HORSE WALKERS. WITH THEIR NON-SLIP PROPERTIES AND HEAT INSULATING FEATURES, THEY MAKE AN IMPORTANT CONTRIBUTION TO PROTECTING HORSES' SOUNDNESS. THEY ARE WEATHERPROOF AND FROST-RESISTANT (-40° TO +80°C), URINE-RESISTANT AND SOUND-ABSORBING.

PRODUCT INFORMATION	
measure	200 x 165 x 44 mm
required amount	approx. 35 pcs./1sqm
weight	1.05 kg
colour	red, black



OTTO ARENA LEVELLERS FOR PROFESSIONAL ARENA MAINTENANCE

DELUXE – FOR MAXIMUM PERFORMANCE

The OTTO Arena Leveller „DELUXE“ ensures top-of-the-line maintenance and maximum appearance of the equestrian arena. Numerous extras facilitate daily maintenance work and provide well-kept appearance of the surface. The height-adjustable drag board is strengthened by armor steel plates to minimize wear and tear. An integrated roller enhances compacting of the footing and creates a consistent pattern so as to put your arena in the spotlight in a functional and visual way alike. The spring tines are height-adjustable accurate to the millimeter. A lateral hoof print rake helps to achieve a level footing even along the edge of the arena. Sticking to the tractor and unhitching is easier due to a height-adjustable pillar. A transportation bolt allows safe carriage on the road. The leveller is adjustable in height and therefore can be used for different types of tractors.



PRODUCT INFORMATION	
width	2.40 m
length	2.20 m
height	1.20 m
weight	approx. 500 kg

TRAILER BALL – THE HANDY ONE

With its trailer ball, this model offers a variety of application possibilities: It can be connected to almost any vehicle that has a tow hitch. Arena maintenance can be done by tractor, by quad bike or even by car. A transport wheel allows safe carriage outside the arena.

Height-adjustable spring tines with exchangeable plowshares, a height-adjustable drag board and a roller with an integrated worm conveyor are basic hardware of the arena leveller. The tow hitch is also height-adjustable and can be customized to the respective vehicle individually. At extra charge, the arena leveller can also be equipped with a lateral hoof print rake.

PRODUCT INFORMATION	
width	1.80 m
length	2.20 m
height	1.00 m
weight	approx. 280kg



PRODUCT INFORMATION	
width	2.30 m
length	1.20 m
height	1.00 m
weight	approx. 170kg

BASIC – THE BASIC MODEL

The zinc-coated OTTO Arena Leveller “BASIC” helps to get your footing in top shape: Continuously variable spring tines allow sand to break up easily. The drag board (incline adjustable in five levels) can be used for every type of footing.

The leveller is suited for every tractor with an engine of at least 30 HP that has a three-point hydraulic linkage.





DUBAI



GERMANY



ITALY

CHAMPIONSHIPS VAULTING 2008, BRNO +++ REITVEREIN REICHENBACH-HOCHDORF E. V. +++ **FEI WORLD CUP GRAND PRIX, BRNO** +++ REITSTALL ZIEGELHÜTTE, ALTDORF +++ **EUROPEAN CHAMPIONSHIPS DRESSAGE 2007, TURIN** +++ REITERHOF ST. GEORG, BESTENSEE +++ **EUROPEAN CHAMPIONSHIPS DRESSAGE 1999, ARNHEIM** +++ **FEI EUROPEAN JUMPING CHAMPIONSHIP 2011, MADRID** +++ REITSTALL STOLBERG, HANNOVER +++ **MEDITERRANEAN GAMES 2009, PESCARA** +++ **CIRCOLO IPPICO CASALE SAN NICOLA, ROME** +++ **INTERNATIONAL DRESSAGE AND JUMPING FESTIVAL, VERDEN** +++ REITSTALL TASDORF +++ **MUNICH INDOORS** +++ **OTTOSPORT** +++ REITANLAGE EICHNERHOF, PÖRNBACH +++ **FESTHALLEN-REITTURNIER, FRANKFURT** +++ REITVEREIN WEISSENBURG +++ **GROSSER PREIS VON SACHSEN, ZWICKAU** +++ REITVEREIN SEEBARN +++ **ATLANTIC EQUESTRIAN TOUR, COMPORTA** +++

REITVEREIN HOHENSTEIN E.V., COBURG +++ **FRANKE SLOOT-HAAK** +++ **MEREDITH MICHAELS-BEERBAUM** +++ **MARKUS BEERBAUM** +++ **LARS NIEBERG** +++ **JOHN WHITAKER** +++ **OTTOSPORT** +++ REITANLAGE FEUCHT +++ **KLAUS BALKENHOL** +++ **DEBBIE MCDONALD** +++ REIT- UND FAHRVEREIN DONAU-ESCHINGEN E.V. +++ **VICTORIA MAX-THEURER** +++ **CATHERINE HADDAD** +++ REITCLUB ACHERN E. V. +++ **ANNA PAPROCKA CAMPANELLA** +++ REIT- UND FAHRVEREIN SENDEN E.V. +++ **ROBERT WHITAKER** +++ **BUNDESWEHR SPORTS SCHOOL, WARENDORF** +++ REIT- UND FAHRSPORTVEREIN WÜRZBURG E. V. +++ **BAYERISCHES HAUPT- UND LANDGESTÜT SCHWAIGANGER, OHLSTADT** +++ REITSTALL WEIKERSDORF +++ **DERBY-PARK HAMBURG** +++ REITERHOF KURZE, BOBERSEN +++ **GESTÜT ZYX, ELBTAL** +++ REITCLUB TATTERSALL, NÜRNBERG +++ **GESTÜT VORWERK, CAPPELN**



Otto Sport- und Reitplatz GmbH

Am Umspannwerk 6

90518 Altdorf / Germany

E-Mail info@ottosport.com

phone +49 9187 97 11-0

fax +49 9187 44 36

Internet www.ottosport.com